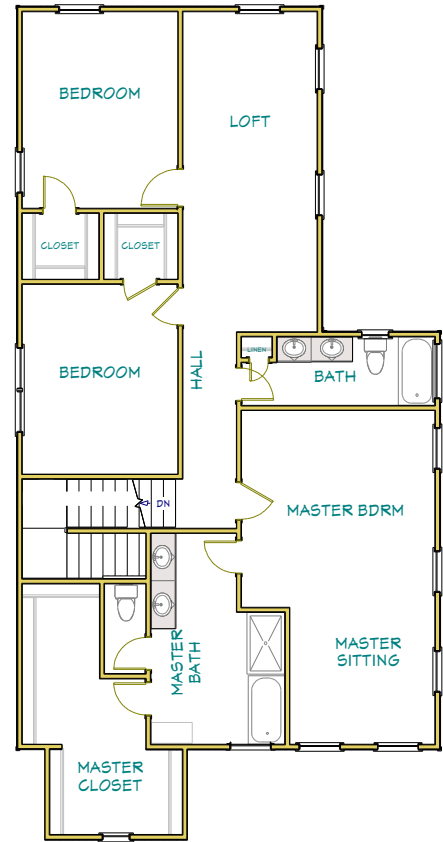


FIRST FLOOR



SECOND FLOOR

DRAWINGS PROVIDED BY:

Beacon Builders, Inc.  **BEACON
NEW HOMES**
 7370 Hodgson Memorial Dr.
 Suite D-10
 Savannah, GA 31406
 912-352-0623

**RESIDENT
PLANS**

**LEWIS PLAN
PLATINUM PACKAGE
2645 SQFT.**

The house plans depicted herein are for presentation only. They do not reflect the builders final specifications & layout. Any price quoted is subject to change without notice & subject to confirmation by the builder.